

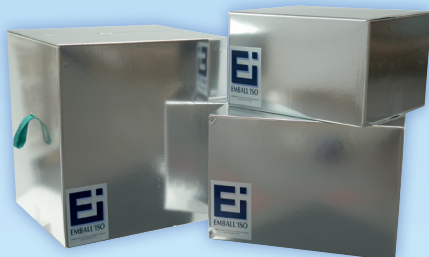


INSULATED SHIPPER Range

COOL (+2°C/+8°C)



EMBALL'ISO designs, manufactures and pre-qualifies its COOL range of insulated shippers. This is a solution for the transport at +2°/+8°C, for 24 to 120 hours, for product volumes ranging from 2 to 43 litres.

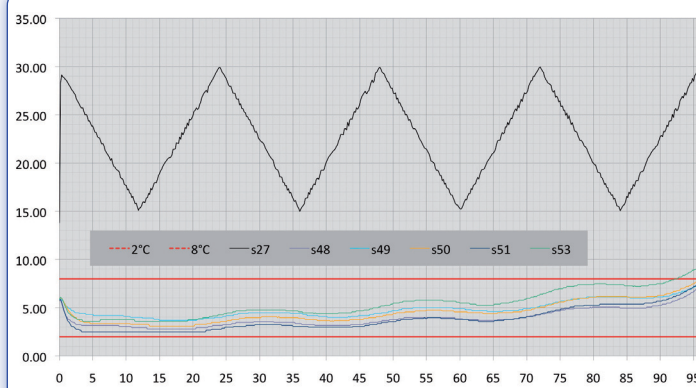
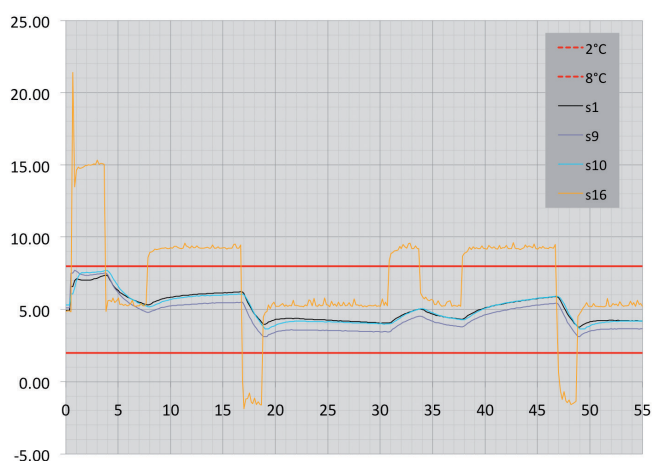


- ▶ **Temperature:** +2°C/+8°C
- ▶ **Duration:**
 - National Transport (SN): 24 to 48h
 - International Transport (SE): 72 to 120h
- ▶ **Payload:** 2 to 43 litres
- ▶ **Validated Range**, in accordance with international standards
- ▶ **Our added value, service:** Technical advice, training for operators, etc
- ▶ **Reducing transport cost:** optimization of packaging
- ▶ Possibility of **specific product** according to customer's specification and **customization** (logos)
- ▶ **Product made with recyclable materials**



Validated Range

- ▶ Our COOL range is pre-qualified in our validation laboratory.
- ▶ Technical documentation available on request.



Our standard references: *National Standard (SN) / Export Standard (SE)*

References	Temperature (°C)	Duration (h)	Payload (L)	Exterior dimensions (mm)	Interior dimensions (mm)	System weight (Kg)
Cool SN2	+2/+8	48	2	270x270x260	200x100x100	1.76
Cool SN5	+2/+8	48	5	271x271x302	205x205x125	2.5
Cool SN7	+2/+8	24	7	271x271x302	225x225x145	1.8/2.2
Cool SN10	+2/+8	48	10	366x346x322	300x180x190	4
Cool SN13	+2/+8	24	13	366x346x322	320x200x205	3.4/3.8
Cool SN20	+2/+8	48	20	470x380x390	400x200x250	6.8
Cool SN25	+2/+8	24	25	465x375x380	410x235x260	5.5/6.4
Cool SN36	+2/+8	24	36	600x440x390	450x290x275	10.2
Cool SE10	+2/+8	72	10	485x390x300	295x200x175	6
Cool SE20	+2/+8	96	20	585x485x434	360x260x215	17.6
Cool SE43	+2/+8	96	43	586x506x649	360x280x430	28.4

Other products of COOL range

- ▶ Insulated shippers High Performand
- ▶ Large volumes: Box Pallet and Air Cargo Pallet
- ▶ Reusable: Bags and Shuttle Boxes



Emball'iso

320 Rue de l'Avenir - ZI des Vernailles
69830 Saint Georges de Reneins - France
TEL: +33 (0)4 74 09 70 80 • FAX: +33 (0)4 74 67 60 39
www.emballiso.com • email: isostar@emballiso.com





Large **VOLUMES RANGE**

Box Pallet (BP)



EMBALL'ISO designs, manufactures and pre-qualifies its range of large volume Box Pallet, insulated systems, optimizing the volumetric weight to reduce the overall cost of air transport.

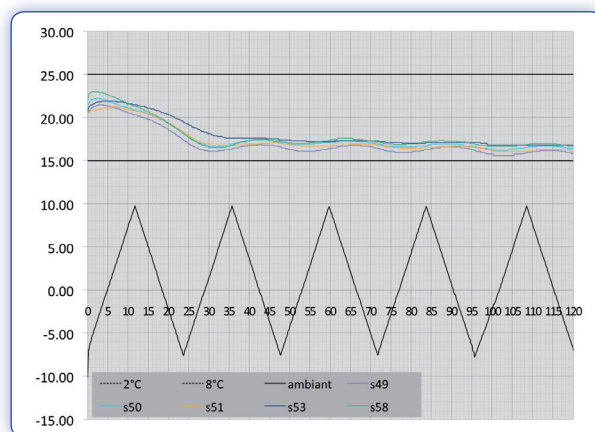
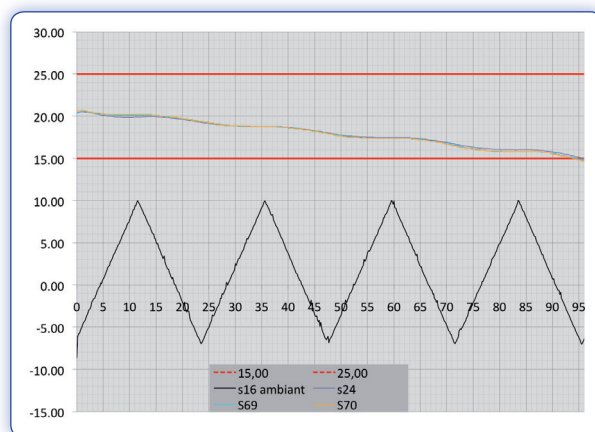


- ▶ **Temperature**
 - Freeze range: - 40°C
 - Cool range: +2°C / +8°C
 - Temperate range: +2°C/+25°C and +15°C/+25°C
- ▶ **Duration:** 72 to 120+ hours
- ▶ **Large volume capacity of product:** 95 to 564 litres
- ▶ **Validated Range**, in accordance with international standards
- ▶ **Optimization:**
 - Of the volumetric weight, allowing the reduction of transport costs.
 - Isothermal filling system with your products via our 3D software.
- ▶ **IATA ID:** required by all transport companies and air cargo.
- ▶ **Easy of installation and filling**
 - Frontal door-system allowing easy product placement
 - One briquette reference for the whole range
- ▶ **Possibility to customize:** printing and logo



Validated Range

- ▶ Our Box Pallet range is pre-qualified in our validation laboratory.
- ▶ Technical documentation available on request.



Our standard references

References	Temperature (°C)	Duration (h)	Payload (L)	Exterior dimensions (mm)	Interior dimensions (mm)	System weight (Kg)
Freeze BP95	-40	48 to 144	55 to 107	799x599x658	640x445x470	40
Cool BP95	+2/+8	96	95	799x599x658	565x370x455	40
Cool BP171	+2/+8	96	171	800x1200x580	972x572x307	50
Cool BP438	+2/+8	72	438	1200x800x940	992x592x745	87
Cool BP564	+2/+8	96/120	564	1000x1200x1110	925x730x835	108
Temperate BP87	+15/+25	120	87	799x599x658	565x370x415	76
Temperate BP306	+2/+25	-	306	800x1000x800	906x706x479	53
Temperate BP414	+15/+25	120	414	1200x800x940	992x592x705	174
Temperate BP564	+15/+25	120	564	1000x1200x1250	925x730x835	173 to 245

- ▶ **Possibility of specific product** according to specifications of the customer.

Complementary products

- ▶ Large volumes: Air cargo pallet (PMC / PAG)
- ▶ Insulated shippers: freeze, cool and temperate range



Emball'iso

320 Rue de l'Avenir - ZI des Vernailles
69830 Saint Georges de Reneins - France
TEL: +33 (0)4 74 09 70 80 • FAX: +33 (0)4 74 67 60 39
www.emballiso.com • email: isostar@emballiso.com





Large **VOLUMES RANGE**

Air Cargo Pallet (**PMC/PAG**)



EMBALL'ISO designs, manufactures and pre-qualifies its range of Air Cargo Pallet shippers, PMC/PAG, optimizing the volumetric weight to reduce the overall cost of air transport.



1/4 PMC



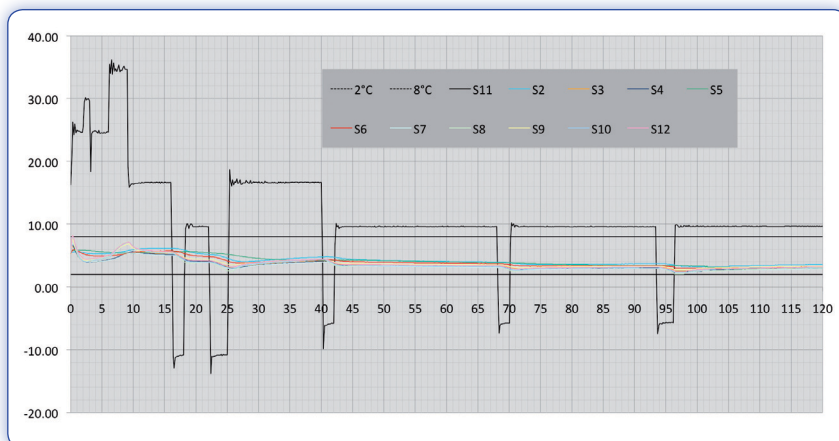
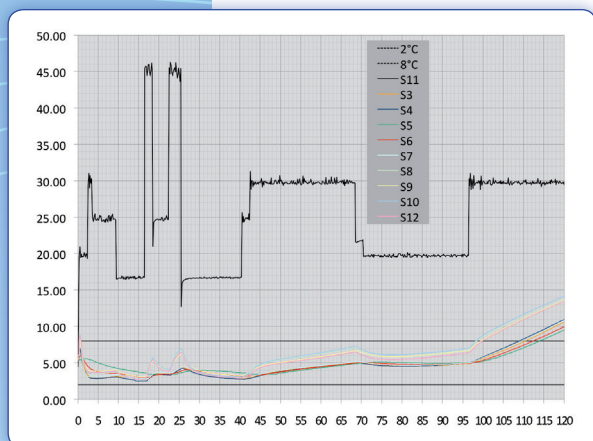
1/2 PMC

- ▶ **Temperature:** +2°C / +8°C
- ▶ **Duration:** 96 to 120 hours
- ▶ **Large volume capacity of product**
 - ¼ PMC: Capacity 1 standard European pallet (1419 litres)
 - ½ PMC: Capacity 2 standard American pallets (3329 litres)
- ▶ **Validated Range**, in accordance with international standards
- ▶ **Reduced cost of air transport: optimization of weight / volume**,
The use of better insulation material (22mW) reduces the weight of refrigerated systems, optimizes the interior space and therefore reduces the transportation cost.
- ▶ **IATA ID:** required by all transport companies and air cargo.
- ▶ **Ease of installation and filling**
 - 6 minutes and one person is sufficient to assemble the system, place the refrigerated packs and load thermo sensitive products.
 - Convenient front-loading system.
- ▶ **Reduced storage and delivery:** flat-pack delivered or volume.
- ▶ **Ease of movement** by standard forklift.



Validated Range

- ▶ Our COOL range is pre-qualified in our validation laboratory.
- ▶ Technical documentation available on request.



Our standard references

References	Temperature (°C)	Duration (h)	Payload (L)	Exterior dimensions (mm)	Interior dimensions (mm)	System weight (Kg)
Cool 1/4PMC	+2/+8	120	1448	1545x1170x1575	1278x908x1248	160
Cool 1/2 PMC	+2/+8	120	3410	2400x1545x1575	2138x1278x1248	268

Other Products

- ▶ Ranges: Large volumes (Box Pallet), Reusable and Insulated shippers.
- ▶ Temperatures available: Freeze, Cool and Temperate



Emball'iso

320 Rue de l'Avenir - ZI des Vernailles
69830 Saint Georges de Reneins - France
TEL: +33 (0)4 74 09 70 80 • FAX: +33 (0)4 74 67 60 39
www.emballiso.com • email: isostar@emballiso.com





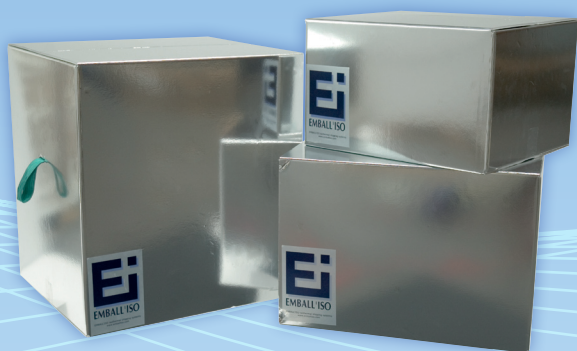
INSULATED SHIPPER Range

Temperate (+2°C/+25°C & +15°C/+25°C)



EMBALL'ISO designs, manufactures and pre-qualifies its range of TEMPERATE insulated shippers. This is a solution for the transport at +2/+25°C and +15/+25°C, for 24 to 120 hours, for product volumes ranging from 5 to 43 litres.

Bags

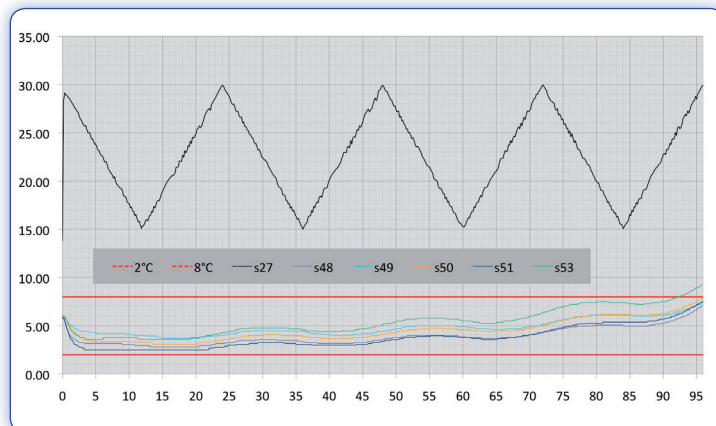
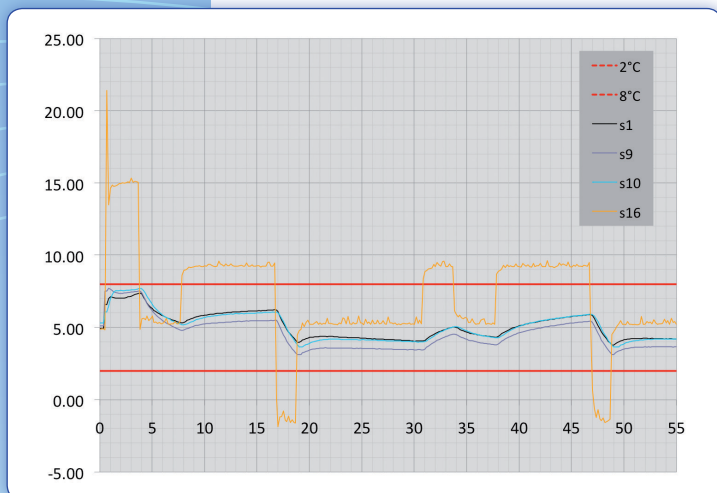


- ▶ **Temperature:** +2°C/+25°C et +15°C/+25°C
- ▶ **Duration:**
 - National Transport (SN): 24 to 48h
 - International Transport (SE): 72 to 120h
- ▶ **Payload:** from 5 to 43 litres
- ▶ **Validated Range,** in accordance with international standards
- ▶ **Added value service:** Technical advice, training for operator, etc
- ▶ **Reducing transport cost:** Optimization of packaging
- ▶ Possibility of **specific product** according to customer's specification and **customization** (logos)
- ▶ **Product made with recyclable materials**



Validated Range

- ▶ Our TEMPERATE range is pre-qualified in our validation laboratory.
- ▶ Technical documentation available on request.



Our standard references

References	Temperature (°C)	Duration (h)	Payload (L)	Exterior dimensions (mm)	Interior dimensions (mm)	System weight (Kg)
Temperate SN5	+2/+25	48	5	275x275x270	205x205x125	Different according to season
Temperate SN10	+2/+25	48	10	370x350x330	300x180x190	
Temperate SN20	+2/+25	48	20	470x380x390	400x200x250	
Temperate SE12	+15/+25	72 to 120	12	498x403x384	310x215x178	
Temperate SE20	+15/+25	72 to 120	20	585x485x434	360x260x215	
Temperate SE43	+15/+25	72 to 120	43	586x506x649	360x280x430	

- ▶ **Possibility of specific product** according to specifications of the customer.

Other products of TEMPERATE range

- ▶ Large volumes: Box Pallet



Emball'iso

320 Rue de l'Avenir - ZI des Vernailles
69830 Saint Georges de Reneins - France
TEL: +33 (0)4 74 09 70 80 • FAX: +33 (0)4 74 67 60 39
www.emballiso.com • email: isostar@emballiso.com





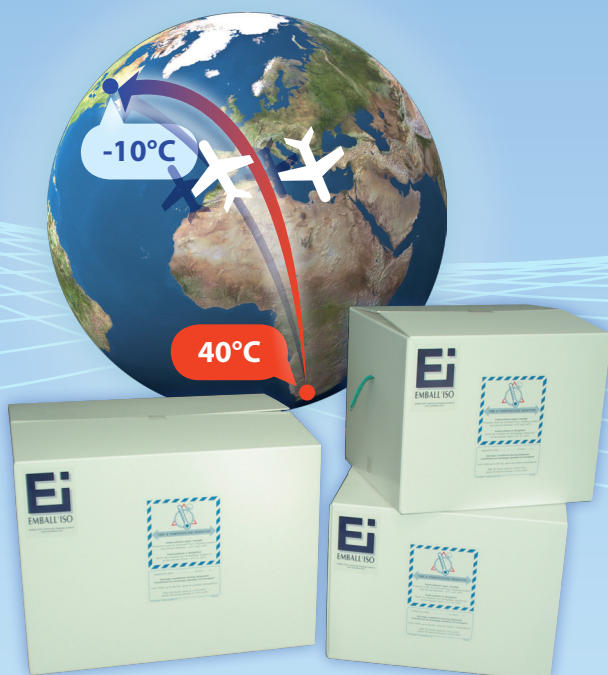
INSULATED SHIPPER Range

High Performance shipper (HP) (+2°C/+8°C)



EMBALL'ISO designs and validates high performance insulated systems to meet with most complex shipping and extreme condition requirements

A single standard operating procedure all year-round covering all destinations.



- ▶ **Temperature:** +2°C/+ 8°C
- ▶ **Duration:** 96 to + 120 hours
- ▶ **Payload:** 11 to 40 litres
- ▶ **Specifically designed for clinical trials**
- ▶ **Validated range,** highly secure.
- ▶ **A single operating procedure (SOP) for the whole year and all destinations.**
- ▶ **From -10°C to +40°C with the same performance**
Solution for complex transport and extreme conditions.
- ▶ **Optimization**
 - Of the volumetric weight, allowing the reduction of transport and in extreme conditions.
 - Isothermal filling system with your products via our 3D software.
- ▶ **Option to customize:** printing and logo

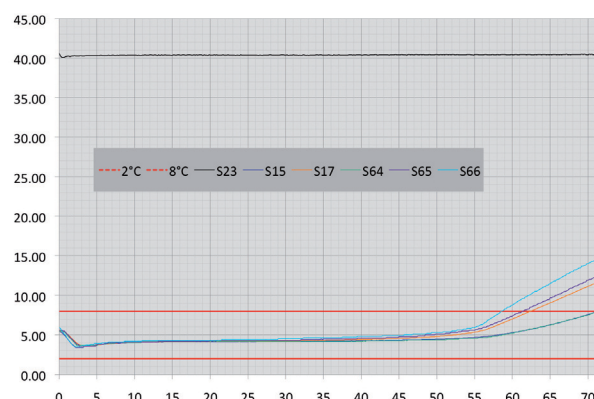
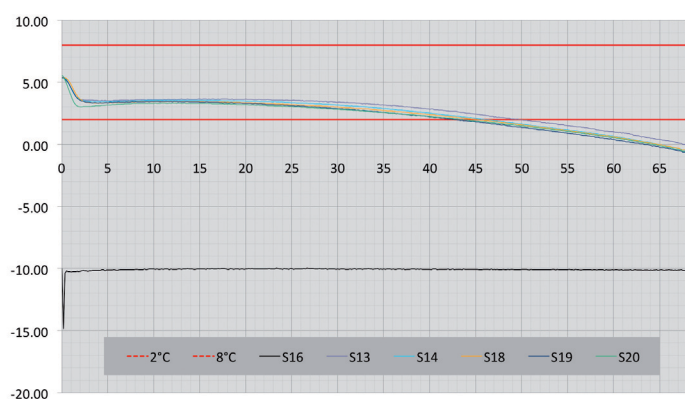




Validated Range

- ▶ Range pre-qualified in our validation laboratory, for durations of 120+ hours.
- ▶ Technical documentation available on request.

Stress test: from -10°C to + 40°C showing the high security of the system.
Validated cycles hot to cold and hot to cold



Our standard references

References	Temperature (°C)	Duration (h)	Payload (L)	Exterior dimensions (mm)	Interior dimensions (mm)	System weight (Kg)
Cool HP11	+2/+8	120	11	598x548x496	275x230x170	26.1
Cool HP20	+2/+8	96	19	670x580x495	370x280x180	26.7
Cool HP33	+2/+8	120	33	799x629x596	460x290x250	47.6
Cool HP40	+2/+8	96	40	800x600x630	480x280x300	48

- ▶ **Possibility of specific product** according to specifications of the customer.

Other products of COOL range

- ▶ Insulated shippers: National Transport and International Transport
- ▶ Large volumes: Box Pallet and Air Cargo Pallet
- ▶ Reusable: Bags and Shuttle Boxes



Emball'ISO

320 Rue de l'Avenir - ZI des Vernailles
69830 Saint Georges de Reneins - France
TEL: +33 (0)4 74 09 70 80 • FAX: +33 (0)4 74 67 60 39
www.emballiso.com • email: isostar@emballiso.com





REUSABLE Range

Insulated Bags



Emball'Iso insulated bags are reusable systems for transport of temperature sensitive products for periods ranging from hours up to a day: pharmacy trips / patient's home, weekends, travelling by air transport or internally in hospitals.

- ▶ **Temperature:** +2°C / +8°C
- ▶ **Duration:**
from hours to a day
- ▶ **Payload:** from 0.5 to 3.5 litres
- ▶ **Product « Last Mile »**
- ▶ **Validated Range**, in accordance with international standards
- ▶ **Robust:** impact resistant
- ▶ **Washable product and easy care:**
waterproof
- ▶ **Excellent communication support:**
Personnalisation of product: logos /label, colour, etc

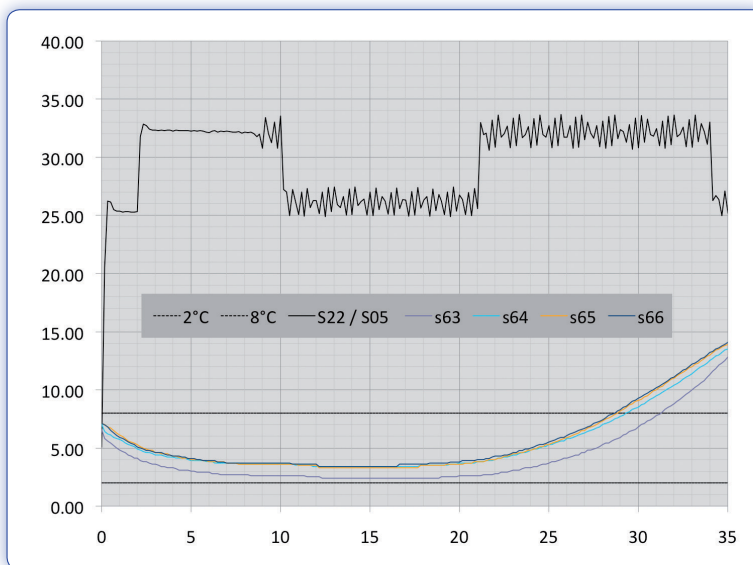


Bags



Validated Range

- ▶ Range pre-qualified in our validation laboratory.
- ▶ Validation protocols have been developed for summer and winter cycles.
- ▶ Technical documentation available on request.



Our standard references

Insulated bags

References	Temperature (°C)	Duration (h)	Payload (L)	Exterior dimensions (mm)
Bag n°1	+2/+8	7 to 24	0.5	180x35x104
Bag n°2	+2/+8	7 to 24	1.3	235x180x165
Bag n°3	+2/+8	7 to 24	3.63	265x230x230

Other products

- ▶ Range: Insulated shippers, Large volumes and Reusable
- ▶ Temperatures available: Freeze, Cool and Temperate



Emball'iso

320 Rue de l'Avenir - ZI des Vernailles
69830 Saint Georges de Reneins - France
TEL: +33 (0)4 74 09 70 80 • FAX: +33 (0)4 74 67 60 39
www.emballiso.com • email: isostar@emballiso.com





REUSABLE Range

Shuttle Boxes Insulated Bags



The EMBALL'ISO reusable range is for transport of temperature sensitive products for periods ranging from a couple of hours up to a day.

Designed for use among dispatchers, hospital or home hospitalization.



Shuttle boxes

- ▶ **Temperature:** +2°C / +8°C
- ▶ **Duration:**
from a couple of hours up to a day
- ▶ **Payload:** from 0.5. to 25 litres
- ▶ **Validated Range,** in accordance with international standards
- ▶ **Robust**
- ▶ **Washable product and easy care:**
waterproof
- ▶ **Secure Product:** with addition of locks, etc...

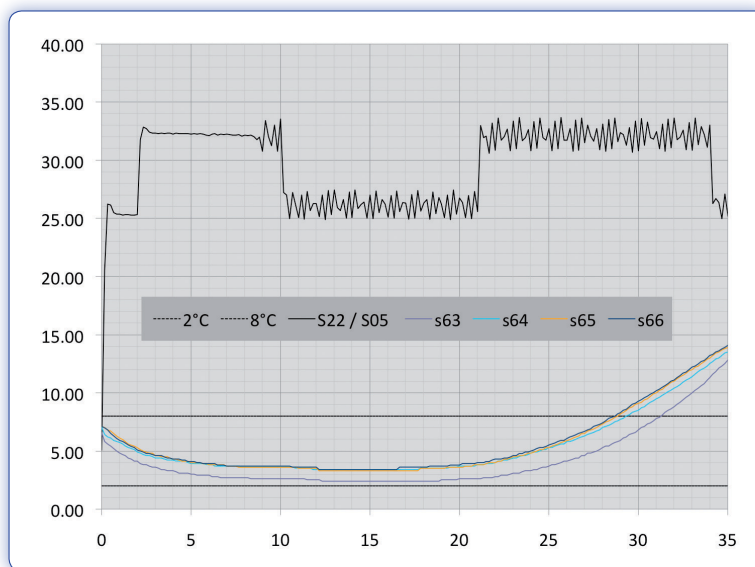


Bags



Validated Range

- ▶ Range pre-qualified in our validation laboratory.
- ▶ Technical documentation available on request.



Our standard references

Shuttle boxes

References	Temperature (°C)	Duration (h)	Payload (L)	Exterior dimensions (mm)	System weight (Kg)
Shuttle box n°1	+2/+8	10 to 24	3.5 to 5	400x300x220	1.180
Shuttle box n°2	+2/+8	12 to 24	25	600x400x345	7

Insulated Bags

References	Temperature (°C)	Duration (h)	Payload (L)	Exterior dimensions (mm)	System weight (Kg)
Bag n°1	+2/+8	7 to 24	1.3	235x180x165	3xN2GT
Bag n°2	+2/+8	7 to 24	3.63	265x230x230	4xN2GT

Other products

- ▶ Range: Insulated shippers and Large Volumes
- ▶ Temperatures available: Freeze, Cool and Temperate



Emball'iso

320 Rue de l'Avenir - ZI des Vernailles
69830 Saint Georges de Reneins - France
TEL: +33 (0)4 74 09 70 80 • FAX: +33 (0)4 74 67 60 39
www.emballiso.com • email: isostar@emballiso.com





THERMAL STABILIZERS

Range



EMBALL'ISO designs and manufactures its own thermal stabilizers (blow, fill, seal) to ensure complete control of the cold chain. This approach provides high technology products, tailored and optimized insulated shippers.



- ▶ **We control the entire manufacturing process from blow, fill to packaging.**
 - Production « made in France »: Lyon factory
 - ISO 9001 and ISO 14001
- ▶ **Terms:** Rigid Briquettes or flexible presentations
- ▶ **Content:** non-toxic
 - A water – based + translucent gel: mp 0°C
 - Suitable for food contact and complying with CE regulations.
 - Wide variety of PCM (phase changing material): mp: -21°C, 0°C, +5°C et +22°C
- ▶ **Wide range of references** and unit packs (cases)
- ▶ **Possibility of custom fabrication**
Dimensions, specific containers, logos and marketing
- ▶ **Manufacturing recyclable material (PEHD)**
- ▶ **Competitive pricing:**
More than 4 millions units produced a year



Our standard references

Briquettes

References	Melting point (°C)	Dimensions (mm)	Weights (Gms)
N2GT	0	172x90x20	220
N4GT	0	172x90x35	440
N6GT	0	190x121x36	600
N8GT	0	172x167x37	880
N1.2GT	0	228x180x35	1200
N1.6GT	+5	240x285x26	1600
PCM5	+5	Same range melting point 0°C	
PCM22	+22		
PCM-21	-21		

Soft Ice pack

References	Melting point (°C)	Dimensions (mm)	Weights (Gms)
Dose 400 gr	0	200x150	400
Dose 200 gr	0	150x150	200

Possibility of specific product according to specifications of the customer.

Additional services

- ▶ Storage of briquettes in close vicinity to your premises.
- ▶ Delivery of your frozen ice packs « just in time »
- ▶ Recovery of briquettes for recycling



Emball'iso

320 Rue de l'Avenir - ZI des Vernailles
69830 Saint Georges de Reneins - France
TEL: +33 (0)4 74 09 70 80 • FAX: +33 (0)4 74 67 60 39
www.emballiso.com • email: isostar@emballiso.com

